

cFluor® R668 Anti-Human CD38 (HIT2)

PRODUCT DETAILS	
Catalog Number:	R7-20093 (100 tests) R7-20094 (25 tests)
Reactivity:	Human, Chimpanzee, Horse
Clone:	HIT2
Format:	cFluor® R668*
Isotype:	Mouse IgG1, κ
Volume Per Test:	5 µL / test
Application:	Flow cytometry
Formulation:	Phosphate-buffered saline, pH 7.2, containing 0.09% sodium azide and 0.2% BSA (BSA Country of Origin USA)
Storage:	2-8°C and protected from light. Do not freeze

PRODUCT DESCRIPTION

The HIT2 monoclonal antibody binds to human CD38, a 45-kDa type II single-chain transmembrane glycoprotein. CD38, also known as T10, is expressed in high levels on plasma cells, activated T cells and terminally differentiated B cells. CD38 has two functions: a receptor or an enzyme. As a receptor, CD38 binds CD31. As an ectoenzyme, CD38 functions both as ADP-ribosyl cyclase and cyclic ADP-ribose hydrolase to catalyze the synthesis of cyclic ADP-ribose to regulate intracellular calcium level, thus playing an essential role in cell signaling and growth ⁽¹⁾⁽²⁾. The antibody was conjugated to a fluorophore and purified by affinity chromatography.

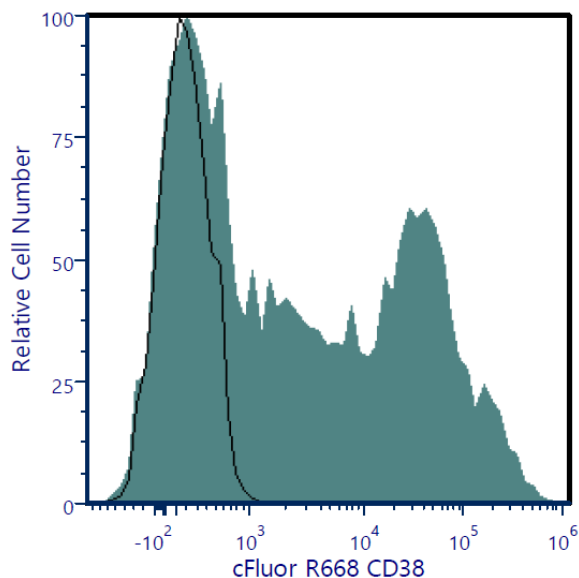
RECOMMENDED USAGE

Each lot of this antibody is quality control tested using flow cytometric analysis. For flow cytometric staining, the suggested use of this reagent is 5 µL per 1 million cells in a staining volume of 100 µL. If whole blood is analyzed, then use 5 µL per 100 µL. It is recommended that users titrate the antibody to obtain the optimal result for their specific application.

Please briefly centrifuge the reagent vial before use.

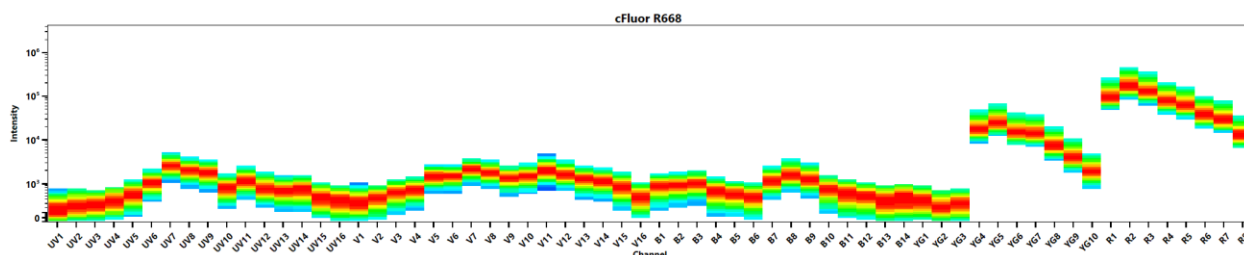
Use appropriate personal protective equipment per the product safety data sheet when using this product.

PRODUCT DATA



Human peripheral blood was stained with cFluor® R668 Anti-Human CD38 (clone HIT2) (filled histogram) or cFluor® R668 mouse IgG1, κ isotype control (open histogram). Data shown is gated on lymphocytes.

Spectral signature of cFluor® YG584 from a Cytek® Aurora 5 laser system equipped with 355 nm, 405 nm, 488 nm, 561 nm and 640 nm lasers using CytekAssaySettings.



REFERENCES

1. Lee, Hon Cheung. 2006. Molecular medicine. 317-23
2. Deng QW, et al. 2019. J Biol Chem. 18;294(42):15293-15303

*cFluor® R668 is equivalent to CF® 647 manufactured and provided by Biotium, Inc. under an Agreement between Biotium and Cytek (LICENSEE). The manufacture, use, sale, offer for sale, or import of the product is covered by one or more of the patents or pending applications owned or licensed by Biotium. The purchase of this product includes a limited, non-transferable immunity from suit under the foregoing patent claims for using only this amount of product for the purchaser’s own internal research. No right under any other patent claim, no right to perform any patented method, and no right to perform commercial services of any kind, including without limitation reporting the results of purchaser’s activities for a fee or other commercial consideration, is conveyed expressly, by implication, or by estoppel.

For Research Use Only. Not intended for use in diagnostic procedures.