

## cFluor<sup>®</sup> V450 Anti-Human CD20 (2H7)

PRODUCT DETAILS	
<b>Catalog Number:</b>	R7-20015 (100 tests) R7-20016 (25 tests)
<b>Reactivity:</b>	Human, Baboon, Capuchin Monkey, Chimpanzee, Cynomolgus, Pigtailed Macaque, Rhesus, Squirrel Monkey
<b>Clone:</b>	2H7
<b>Format:</b>	cFluor <sup>®</sup> V450
<b>Isotype:</b>	Mouse IgG2b, $\kappa$
<b>Test Dilution:</b>	5 $\mu$ L / test
<b>Application:</b>	Flow cytometry
<b>Formulation:</b>	Phosphate-buffered saline, pH 7.2, containing 0.09% sodium azide and 0.2% BSA (BSA Country of Origin USA)
<b>Storage:</b>	2-8°C and protected from light. <b>Do not freeze</b>

### PRODUCT DESCRIPTION

The 2H7 monoclonal antibody binds to human CD20, a 33-37 kDa, four-transmembrane phosphoprotein. CD20 is present on all stages of B cell development except for early pro-B cells or plasma cells to play a role in B-cell activation, proliferation and differentiation<sup>1</sup>. In some studies, CD20 is thought to act as a Ca<sup>2+</sup> channel in the plasma membrane<sup>2</sup>. It is also present on a T cell subset at low levels as well as some follicular dendritic cells. The antibody was conjugated to a fluorophore and purified by affinity chromatography.

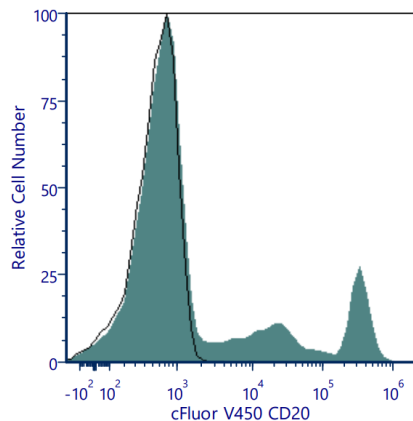
### RECOMMENDED USAGE

Each lot of this antibody is quality control tested using flow cytometric analysis. For flow cytometric staining, the suggested use of this reagent is 5  $\mu$ L per 1 million cells in a staining volume of 100  $\mu$ L. If whole blood is analyzed, then use 5  $\mu$ L per 100  $\mu$ L. It is recommended that users titrate the antibody to obtain the optimal result for their specific application.

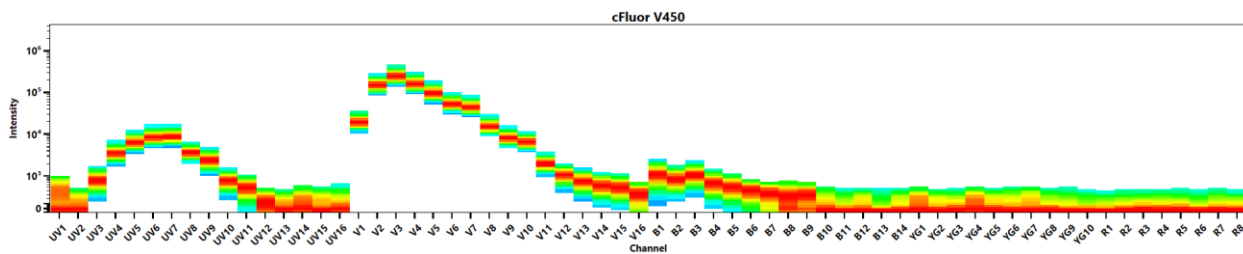
Please briefly centrifuge the reagent vial before use.

Use appropriate personal protective equipment per the product safety data sheet when using this product.

PRODUCT DATA



Human peripheral lymphocytes stained with cFluor® V450 CD20 (clone 2H7) (filled histogram) or mouse cFluor® V450 IgG2b, κ isotype control (open histogram).



Spectral signature of cFluor® V450 from a Cytex® Aurora 5 laser system equipped with 355, 405, 488, 561 and 640 nm lasers using CytexAssaySetting.

REFERENCES

1. Tedder TF, et al. 1994. Immunol Today. 15(9):450–4
2. Putney JW Jr. 1999. Proc Natl Acad Sci U S A. 96(26):14669-14671

For Research Use Only. Not intended for use in diagnostic procedures.