

cFluor[®] BYG 710 Anti-Human CD19 (HIB19)

PRODUCT DETAILS	
Catalog Number:	R7-20009 (100 tests) R7-20010 (25 tests)
Reactivity:	Human, Chimpanzee, Rhesus
Clone:	HIB19
Format:	cFluor [®] BYG710 ¹
Isotype:	Mouse IgG1, κ
Volume Per Test:	5 μ L / test
Application:	Flow cytometry
Formulation:	Phosphate-buffered saline, pH 7.2, containing 0.09% sodium azide and 0.2% BSA (BSA Country of Origin USA)
Storage:	2-8°C and protected from light. Do not freeze

PRODUCT DESCRIPTION

The HIB19 monoclonal antibody binds to human CD19, a 95-kDa type I transmembrane glycoprotein in the immunoglobulin superfamily. CD19 forms a signal transduction complex with the complement receptor 2 (CD21), a tetraspanin membrane protein, TAPA-1 (CD81), and Lue 13 to function as a dominant signaling component on the surface of B cells^{1,2}. It is expressed in all phases of B cell development, maturation and differentiation except at the terminal stage of differentiation, lost in plasma cells³. It is also present on follicular dendritic cells and absent on T cells.

The antibody was conjugated to a fluorophore and purified by affinity chromatography.

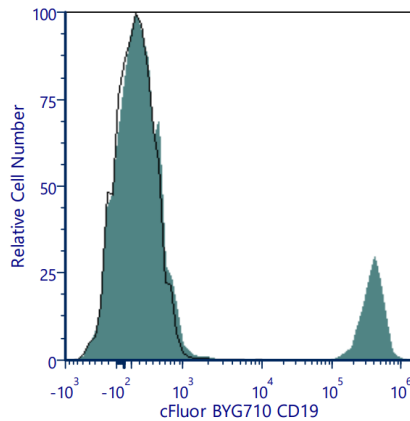
RECOMMENDED USAGE

Each lot of this antibody is quality control tested using flow cytometric analysis. For flow cytometric staining, the suggested use of this reagent is 5 μ L per 1 million cells in a staining volume of 100 μ L. If whole blood is analyzed, then use 5 μ L per 100 μ L. It is recommended that users titrate the antibody to obtain the optimal result for their specific application.

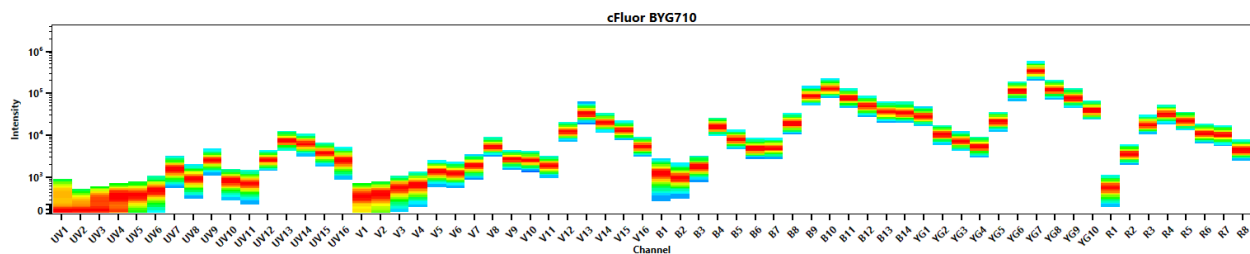
Please briefly centrifuge the reagent vial before use.

Use appropriate personal protective equipment per the product safety data sheet when using this product.

PRODUCT DATA



Human peripheral blood was stained with cFluor® BYG710 CD19 (clone HIB19) (filled histogram) or mouse cFluor® BYG710 IgG1, κ isotype control (open histogram). Data shown is gated on lymphocytes.



Spectral signature of cFluor® BYG710 from a Cytex® Aurora 5 laser system equipped with 355, 405, 561 and 640 nm lasers using CytexAssaySetting.

REFERENCES

1. Wang K, et al. 2012. Exp Hematol Oncol. 10.1186/2162-3619-1-36
2. Bradbury LE, et al. 1993. J Immunol. 151(6):2915-2927.
3. Nadler LM, et al. 1983. J Immunol. 131(1):244-250.

¹cFluor® BYG710 is a tandem dye made with R-PE. Caution – Tandem dyes may show changes in their emission spectra with prolonged exposure to light or fixatives.

For Research Use Only. Not intended for use in diagnostic procedures.