

cFluor[®] V450 Anti-Human CD14 (M5E2)

| PRODUCT DETAILS | |
|-------------------------|--|
| Catalog Number: | R7-20003 (100 tests) R7-20004 (25 tests) |
| Reactivity: | Human, Capuchin Monkey, Chimpanzee, Common Marmoset, Cotton-Topped Tamarin, Cow, Cynomolgus, Dog, Pigtailed Macaque, Rhesus, Squirrel Monkey |
| Clone: | M5E2 |
| Format: | cFluor [®] V450 |
| Isotype: | Mouse IgG2a, κ |
| Volume Per Test: | 5 μ L / test |
| Application: | Flow cytometry |
| Formulation: | Phosphate-buffered saline, pH 7.2, containing 0.09% sodium azide and 0.2% BSA (BSA Country of Origin USA) |
| Storage: | 2-8°C and protected from light. Do not freeze |

PRODUCT DESCRIPTION

The M5E2 monoclonal antibody binds to human CD14, a 53-55-kDa glycosylphosphatidylinositol (GPI)-linked membrane glycoprotein that works as a receptor on myeloid cells for ligands such as lipopolysaccharide (LPS)¹. It is found that CD14 is a receptor for and binds to complexes of LPS and LBP with high affinity². It expresses on monocytes and macrophages at high levels. It is also present in some interfollicular dendritic cells and macrophages, reticular dendritic cells and Langerhans cells. The antibody was conjugated to a fluorophore and purified by affinity chromatography.

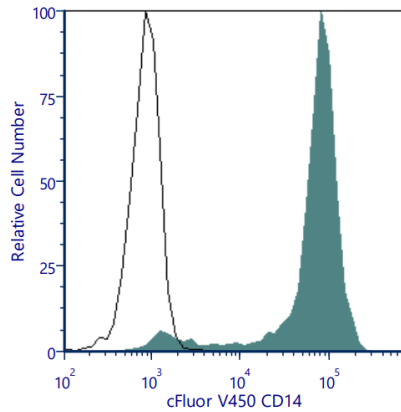
RECOMMENDED USAGE

Each lot of this antibody is quality control tested using flow cytometric analysis. For flow cytometric staining, the suggested use of this reagent is 5 μ L per 1 million cells in a staining volume of 100 μ L. If whole blood is analyzed, then use 5 μ L per 100 μ L. It is recommended that users titrate the antibody to obtain the optimal result for their specific application.

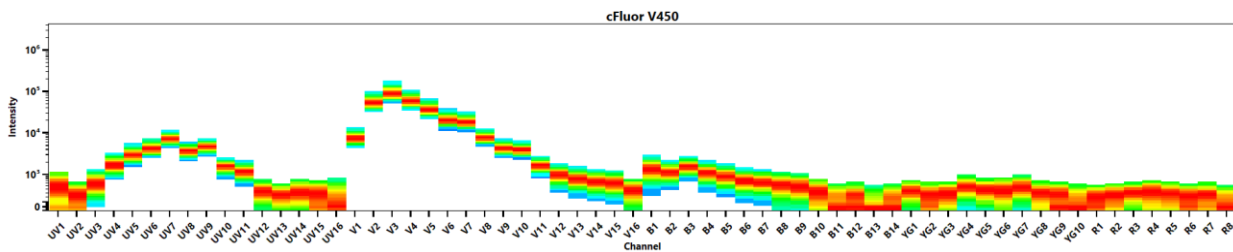
Please briefly centrifuge the reagent vial before use.

Use appropriate personal protective equipment per the product safety data sheet when using this product.

PRODUCT DATA



Human peripheral blood was stained with cFluor® V450 CD14 (clone M5E2) (filled histogram) or mouse cFluor® V450 IgG2a, κ (open histogram). Data shown is gated on monocytes.



Spectral signature of cFluor® V450 from a Cytex® Aurora 5 laser system equipped with 355, 405, 488, 561 and 640nm lasers using CytexAssaySetting.

REFERENCES

1. Pugin J, et al. 1998. Infect Immun. 66:1174
2. Wright SD, et al. 1990. Science. 249:1431

For Research Use Only. Not intended for use in diagnostic procedure