

cFluor[®] BYG781 Anti-Human CD10 (HI10a)

PRODUCT DETAILS	
Catalog Number:	R7-20303 (100 tests) R7-20304 (25 tests)
Reactivity:	Human
Clone:	HI10a
Format:	cFluor [®] BYG781 ¹
Isotype:	Mouse IgG1, κ
Test Dilution:	5 μ L / test
Application:	Flow cytometry
Formulation:	Phosphate-buffered saline, pH 7.2, containing 0.09% sodium azide and 0.2% BSA (BSA Country of Origin USA)
Storage:	2-8°C and protected from light. Do not freeze

PRODUCT DESCRIPTION

The HI10a monoclonal antibody binds to human CD10, a 100 kD neutral endopeptidase and a member of the metalloprotease family. It is a type II transmembrane protein also known as common acute lymphoblastic leukemia antigen (CALLA), enkephalinase, and neprilysin. CD10 is expressed on B cell precursors, T cell precursors, and neutrophils. CD10 is involved in B cell development and has been shown to bind opioid enkephalins, bradykinin, angiotensins I and II, and other biologically active peptides. The antibody was conjugated to a fluorophore and purified by chromatography.

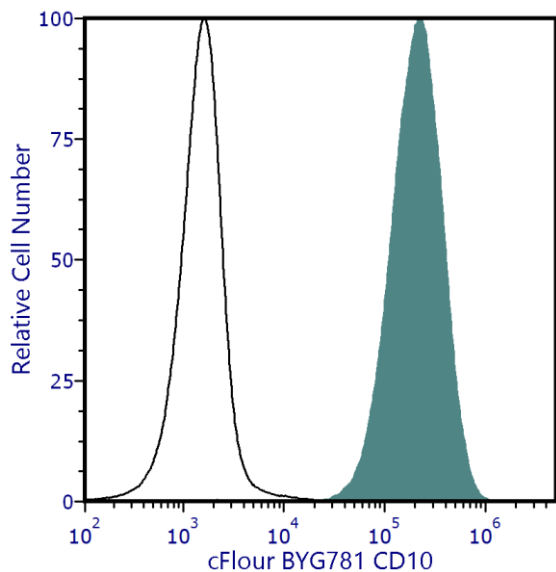
RECOMMENDED USAGE

Each lot of this antibody is quality control tested using flow cytometric analysis. For flow cytometric staining, the suggested use of this reagent is 5 μ L per 1 million cells in a staining volume of 100 μ L. If whole blood is analyzed, then use 5 μ L per 100 μ L. It is recommended that users titrate the antibody to obtain the optimal result for their specific application.

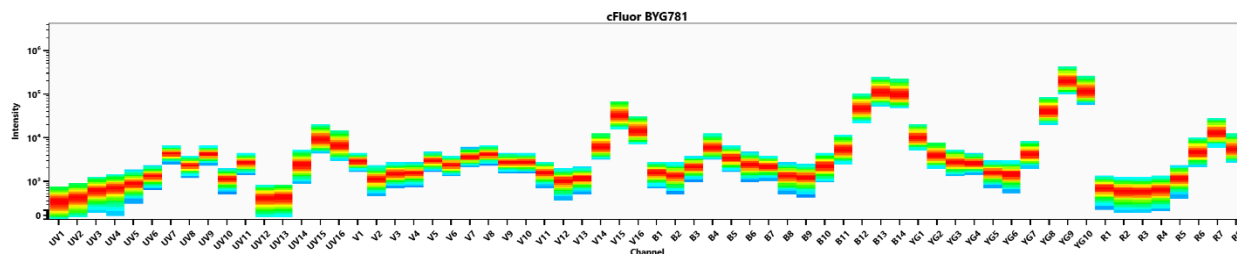
Please briefly centrifuge the reagent vial before use.

Use appropriate personal protective equipment per the product safety data sheet when using this product.

PRODUCT DATA



Human peripheral blood was stained with cFluor™ BYG781 Anti-Human CD10 (clone HI10a) (filled histogram) or cFluor™ BYG781 mouse IgG1, κ isotype control (open histogram). Data shown is gated on granulocytes.



Spectral signature of cFluor® BYG781 from a Cytek® Aurora 5 laser system equipped with 355, 405, 488, 561 and 640 nm lasers using CytekAssaySetting.

REFERENCES

1. Shipp M, et al. 1993. Blood 82:1052.
2. Lu B, et al. 1995. J. Exp. Med. 181:2271.

For Research Use Only. Not intended for use in diagnostic procedures.

¹cFluor® BYG781 is a tandem dye made with R-PE. Caution – Tandem dyes may show changes in their emission spectra with prolonged exposure to light or fixatives.