

cFluor[®] B690 Anti-Human HLA-DR (L243)

PRODUCT DETAILS	
Catalog Number:	R7-20125 (100 tests) R7-20126 (25 tests)
Reactivity:	Human
Clone:	L243
Format:	cFluor [®] B690 ¹
Isotype:	Mouse IgG2a, κ
Volume Per Test:	5 µL / test
Application:	Flow cytometry
Formulation:	Phosphate-buffered saline, pH 7.2, containing 0.09% sodium azide and 0.2% BSA (BSA Country of Origin USA)
Storage:	2-8°C and protected from light. Do not freeze

PRODUCT DESCRIPTION

The L243 monoclonal antibody binds to the human HLA-DR antigen, a 36-kDa alpha heavy chain and a 27-kDa beta light chain heterodimeric cell surface glycoprotein in transmembrane major histocompatibility complex 2 (MHC II) family^{1,2}. HLA-DR, also known as human leukocyte antigen DR isotype, is present on the surface of antigen-presenting cells, including B cells, dendritic cells, macrophages, monocytes and activate T cells. MHC class II regulates the immune system by playing a critical role in binding and presenting antigen-derived peptides to peptide-MHC II-specific CD4 T cells³. The antibody was conjugated to a fluorophore and purified by affinity chromatography.

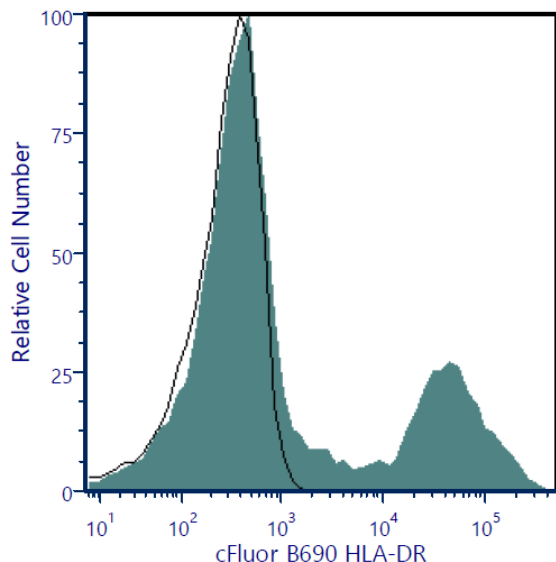
RECOMMENDED USAGE

Each lot of this antibody is quality control tested using flow cytometric analysis. For flow cytometric staining, the suggested use of this reagent is 5 µL per 1 million cells in a staining volume of 100 µL. If whole blood is analyzed, then use 5 µL per 100 µL. It is recommended that users titrate the antibody to obtain the optimal result for their specific application.

Please briefly centrifuge the reagent vial before use.

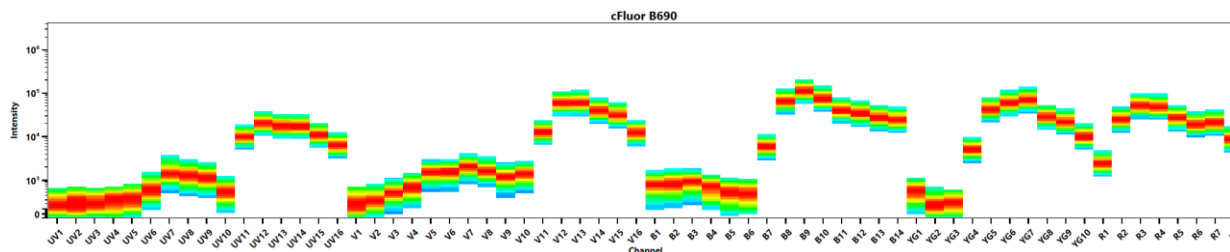
Use appropriate personal protective equipment per the product safety data sheet when using this product.

PRODUCT DATA



Human peripheral blood was stained with cFluor® B690 Anti-Human HLA-DR (clone L243) (filled histogram) or cFluor® B690 mouse IgG2a, κ isotype control (open histogram). Data shown is gated on lymphocytes.

Spectral signature of cFluor® B690 from a Cytek® Aurora 5 laser system equipped with 355, 405, 488, 561 and 640 nm lasers using CytekAssaySetting.



REFERENCES

1. Korman, A J et al. 1982. Proceedings of the National Academy of Sciences of the United States of America vol. 79,19: 6013-7
2. Shackelford DA, et al. 1982. Immunol Rev. 66:133-87
3. Walseng E, et al. 2008. J Biol Chem. 23;283(21):14717-27

¹cFluor® B690 is a tandem dye made with PerCP. Caution – Tandem dyes may show changes in their emission spectra with prolonged exposure to light or fixatives.

For Research Use Only. Not intended for use in diagnostic procedures.