

## cFluor<sup>®</sup> V505 Anti-Human HLA-DR (L243)

PRODUCT DETAILS	
<b>Catalog Number:</b>	R7-20253 (100 tests) R7-20254 (25 tests)
<b>Reactivity:</b>	Human, African Green, Baboon, Chimpanzee, Cynomolgus, Dog (Canine), Marmoset, Rhesus, Squirrel Monkey, Tamarin
<b>Clone:</b>	L243
<b>Format:</b>	cFluor <sup>®</sup> V505
<b>Isotype:</b>	Mouse IgG2a, $\kappa$
<b>Volume Per Test:</b>	5 $\mu$ L / test
<b>Application:</b>	Flow cytometry
<b>Formulation:</b>	Phosphate-buffered saline, pH 7.2, containing 0.09% sodium azide and 0.2% BSA (BSA Country of Origin USA)
<b>Storage:</b>	2-8°C and protected from light. <b>Do not freeze</b>

### PRODUCT DESCRIPTION

The L243 monoclonal antibody binds to the human HLA-DR antigen, a 36-kDa alpha heavy chain and a 27-kDa beta light chain heterodimeric cell surface glycoprotein in transmembrane major histocompatibility complex 2 (MHC II) family <sup>(1)(2)</sup>. HLA-DR, also known as human leukocyte antigen DR isotype, is present on the surface of antigen-presenting cells, including B cells, dendritic cells, macrophages, monocytes and activate T cells. MHC class II regulates the immune system by playing a critical role in binding and presenting antigen-derived peptides to peptide-MHC II-specific CD4 T cells <sup>(3)</sup>. The antibody was conjugated to a fluorophore and purified by affinity chromatography.

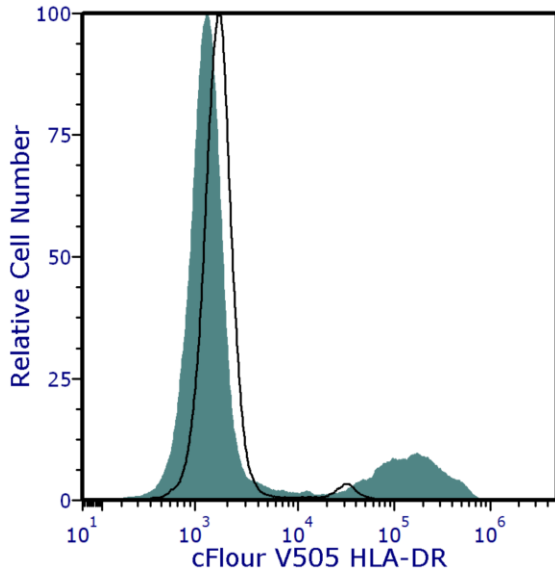
### RECOMMENDED USAGE

Each lot of this antibody is quality control tested using flow cytometric analysis. For flow cytometric staining, the suggested use of this reagent is 5  $\mu$ L per 1 million cells in a staining volume of 100  $\mu$ L. If whole blood is analyzed, then use 5  $\mu$ L per 100  $\mu$ L. It is recommended that users titrate the antibody to obtain the optimal result for their specific application.

Please briefly centrifuge the reagent vial before use.

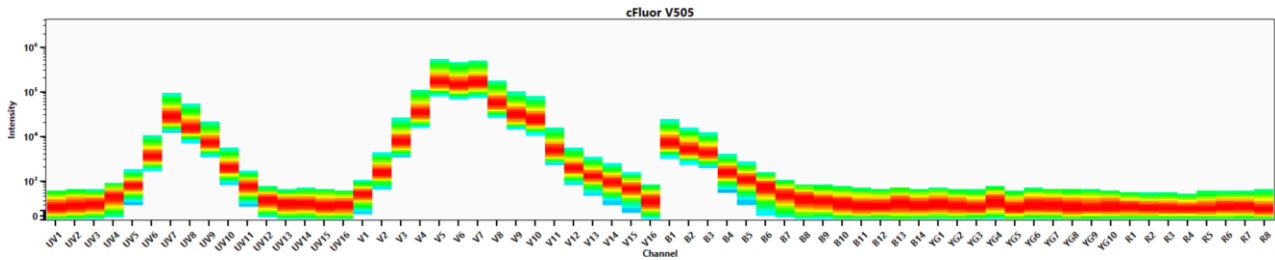
Use appropriate personal protective equipment per the product safety data sheet when using this product.

PRODUCT DATA



Human peripheral blood was stained with cFluor® V505 Anti-Human HLA-DR (clone L243) (filled histogram) or cFluor® V505 mouse IgG2a, κ isotype control (open histogram). Data shown is gated on lymphocytes.

Spectral signature of cFluor® V505 from a Cytek® Aurora 5 laser system equipped with 355 nm, 405 nm, 488 nm, 561 nm and 640 nm lasers using CytekAssaySettings.



REFERENCES

1. Korman, A J et al. 1982. Proc Natl Acad Sci U S A. 79(19):6013-6017
2. Shackelford DA, et al. 1982. Immunol Rev. 66:133-87
3. Walseng E, et al. 2008. J Biol Chem. 23;283(21):14717-27

For Research Use Only. Not intended for use in diagnostic procedures.