

## Cytek® RBC Lyse/Fix Solution 10X

PRODUCT DETAILS	
<b>Catalog number:</b>	R7-60010
<b>Category:</b>	Buffer and sample preparation solution
<b>Application:</b>	Flow cytometry
<b>Formulation:</b>	10X solution
<b>Storage:</b>	2-8°C Do not freeze

### PRODUCT DESCRIPTION

Cytek® RBC Lyse/Fix Solution has been developed for lysing red blood cells and fixing immunofluorescent stained leukocytes in one step. The solution can be used for either lyse/wash or lyse/no wash staining methods. The Cytek® RBC Lyse/Fix Solution is supplied at a 10X concentration and must be diluted to a 1X working concentration with room temperature deionized water before use. The 1X Lyse/Fix solution can be used up to 1 month from the date of preparation when stored at room temperature.

### RECOMMENDED USAGE

Whole Blood Lyse/Wash Protocol:

1. Dilute 1 part of Cytek® RBC Lyse/Fix Solution 10X with 9 parts of room temperature deionized water to prepare 1X RBC Lyse/Fix Solution.
2. Add conjugated antibody to 100 µl of whole blood and vortex gently to mix.
3. Incubate for 15-20 minutes in the dark at room temperature.
4. Add 2 mL of 1X RBC Lyse/Fix Solution and immediately vortex for 5 seconds.
5. Incubate for 10-15 minutes in the dark at room temperature.
6. Centrifuge at 400X g for 5 minutes at room temperature.
7. Decant and wash cells with 3 mL of cell staining buffer.
8. Centrifuge at 400X g for 5 minutes at room temperature.
9. Decant and resuspend cells in 300 µl of cell staining buffer.
10. Acquire samples on flow cytometer.

Whole Blood Lyse/No Wash Protocol:

1. Dilute 1 part of Cytek® RBC Lyse/Fix Solution 10X with 9 parts of room temperature deionized water to prepare 1X RBC Lyse/Fix Solution.
2. Add conjugated antibody to 50 µl of whole blood and vortex gently to mix.
3. Incubate for 15 minutes in the dark at room temperature.
4. Add 450 µl of 1X RBC Lyse/Fix Solution and immediately vortex for 5 seconds.
5. Incubate for 15 minutes in the dark at room temperature.
6. Acquire samples on flow cytometer.

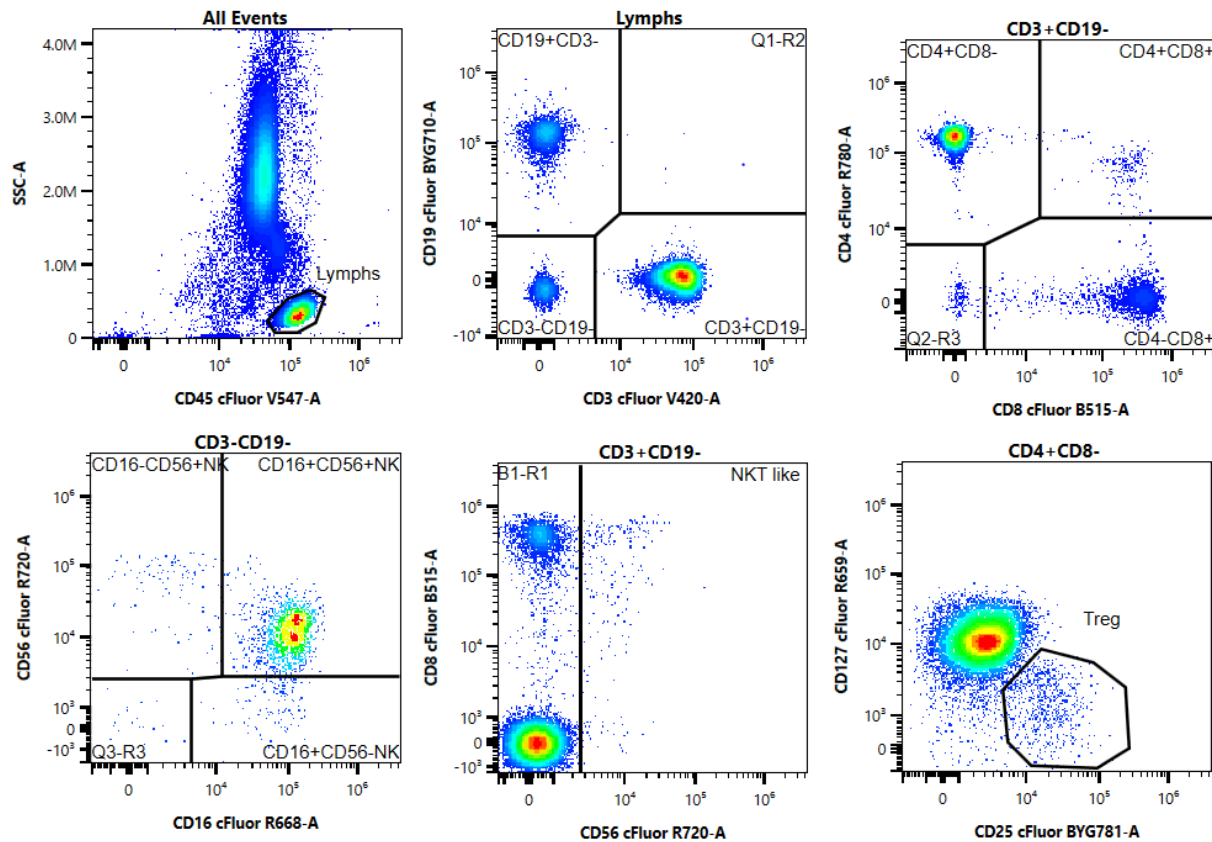
Use appropriate personal protective equipment per the product safety data sheet when using this product.

R8-50266 Rev. A, Effective Date: 07/12/2022

Cytek Biosciences Inc. | 47215 Lakeview Blvd, Fremont, CA 94538

Phone: +1 (510) 657-0102 | Fax: +1 (510) 657-0151 | [cytekbio@cytekbio.com](mailto:cytekbio@cytekbio.com) | [www.cytekbio.com](http://www.cytekbio.com)

**PRODUCT DATA**



Human peripheral blood cells were stained with Cytek cFluor® Immunoprofiling Kit 14 Color RUO kit. Red blood cells were lysed, and immunofluorescent stained leukocytes were fixed with Cytek® RBC Lyse/Fix Solution.

**REFERENCE**

Cherian S, Levin G, Lo WY, Mauck M, Kuhn D, Lee C, Wood BL. Evaluation of an 8-color flow cytometric reference method for white blood cell differential enumeration. *Cytometry Part B* 2010; 78B: 319–328.

Kalina T, Flores-Montero J, van der Velden VH, Martin-Ayuso M, Böttcher S, Ritgen M, Almeida J, Lhermitte L, Asnafi V, Mendonça A, de Tute R, Cullen M, Sedek L, Vidriales MB, Pérez JJ, te Marvelde JG, Mejstrikova E, Hrusak O, Szczepański T, van Dongen JJ, Orfao A; EuroFlow Consortium (EU-FP6, LSHB-CT-2006-018708). EuroFlow standardization of flow cytometer instrument settings and immunophenotyping protocols. *Leukemia*. 2012 Sep;26(9):1986-2010. doi: 10.1038/leu.2012.122. PMID: 22948490; PMCID: PMC3437409.

**For Research Use Only. Not intended for use in diagnostic procedures.**