

cFluor[®] B690 Anti-Human Ig Lambda (1-155-2)

PRODUCT DETAILS	
Catalog Number:	R7-20259 (100 tests) R7-20260 (25 tests)
Reactivity:	Human
Clone:	1-155-2
Format:	cFluor [®] B690 ¹
Isotype:	Mouse IgG1, κ
Volume Per Test:	5 μ L / test
Application:	Flow cytometry
Formulation:	Phosphate-buffered saline, pH 7.2, containing 0.09% sodium azide and 0.2% BSA (BSA Country of Origin USA)
Storage:	2-8°C and protected from light. Do not freeze

PRODUCT DESCRIPTION

The 1-155-2 monoclonal antibody binds to human immunoglobulin light chain, lambda (λ), a 22.5-kDa polypeptide subunit of an antibody. There are two types of immunoglobulin light chains in human: kappa (κ) and lambda (λ). Under normal condition, antibodies produced by B cells only express one type of light chain and ratio of kappa to lambda is approximately 2:1⁽³⁾⁽⁴⁾. The antibody was conjugated to a fluorophore and purified by affinity chromatography.

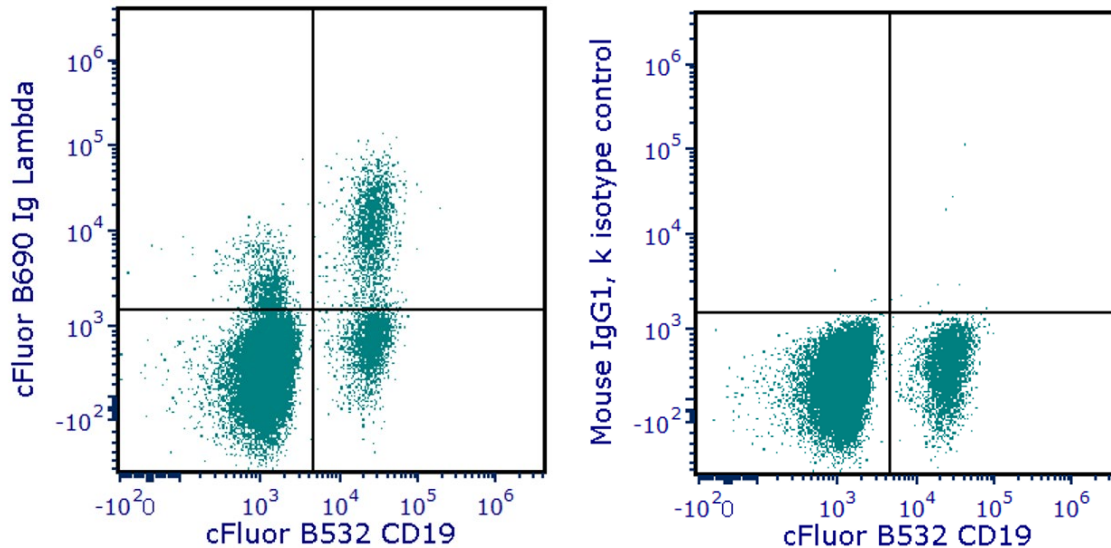
RECOMMENDED USAGE

Each lot of this antibody is quality control tested using flow cytometric analysis. For flow cytometric staining, the suggested use of this reagent is 5 μ L per 1 million cells in a staining volume of 100 μ L. If whole blood is analyzed, then use 5 μ L per 100 μ L of washed blood. It is recommended that users titrate the antibody to obtain the optimal result for their specific application.

Please briefly centrifuge the reagent vial before use.

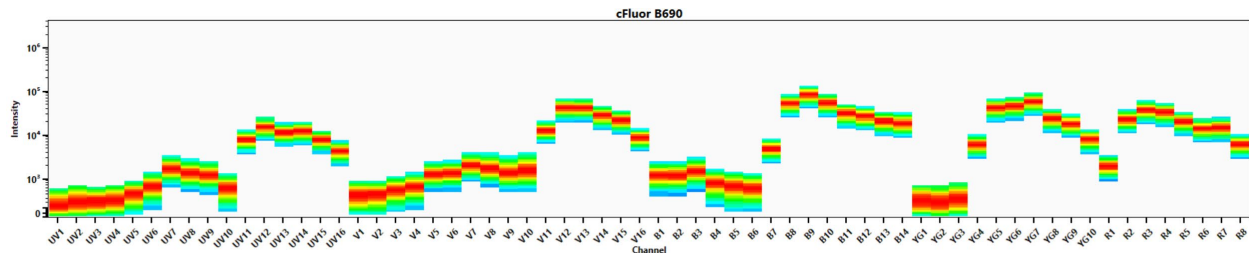
Use appropriate personal protective equipment per the product safety data sheet when using this product.

PRODUCT DATA



Human peripheral blood was washed and stained with cFluor® B532 Anti-Human CD19 and with either cFluor® B690 Anti-Human Ig Lambda (clone 1-155-2) (left) or cFluor® B690 mouse IgG1, κ isotype control (right). Data shown is gated on lymphocytes.

Spectral signature of cFluor® B690 from a Cytex® Aurora 5 laser system equipped with 355 nm, 405 nm, 488 nm, 561 nm and 640 nm lasers using CytexAssaySettings.



REFERENCES

1. G Luo, et al. 2021. Scientific Reports, vol. 11(1):7841.
2. Frigyesi I, Adolfsson, et al. 2014. Blood, vol. 123(9):1336-40.
3. Pierguido et al. 2016. European journal of medical genetics, vol. 59(4): 219-22.
4. Jerry A Katzmann, et al. 2002. Clinical Chemistry, vol. 48(9): 1437-1444.

¹cFluor® B690 is a tandem dye made with PerCP. Caution – Tandem dyes may show changes in their emission spectra with prolonged exposure to light or fixatives.

For Research Use Only. Not intended for use in diagnostic procedures.