

cFluor® R685 Anti-Human CD3 (SK7)

PRODUCT DETAILS	
Catalog Number:	R7-20345 (100 tests) R7-20346 (25 tests)
Reactivity:	Human, Chimpanzee
Clone:	SK7
Format:	cFluor® R685*
Isotype:	Mouse IgG1, κ
Test Dilution:	5 µL / test
Application:	Flow cytometry
Formulation:	Phosphate-buffered saline, pH 7.2, containing 0.09% sodium azide and 0.2% BSA (BSA Country of Origin USA)
Storage:	2-8°C and protected from light. Do not freeze

PRODUCT DESCRIPTION

The SK7 monoclonal antibody binds to human epsilon chain of the CD3 antigen/T-cell antigen receptor, a 20 to 30-kDa protein complex. This complex contains a CD3γ, a CD3δ, a CD3ζ (CD247), two CD3ε, and a T-cell receptor (αβ or γδ) heterodimer¹. CD3 is found on all mature T cells, NK T cells and thymocytes. It plays a role in recognizing antigen, activating cytotoxic T cell and T helper cell, and signal transduction². The antibody was conjugated to a fluorophore and purified by affinity chromatography.

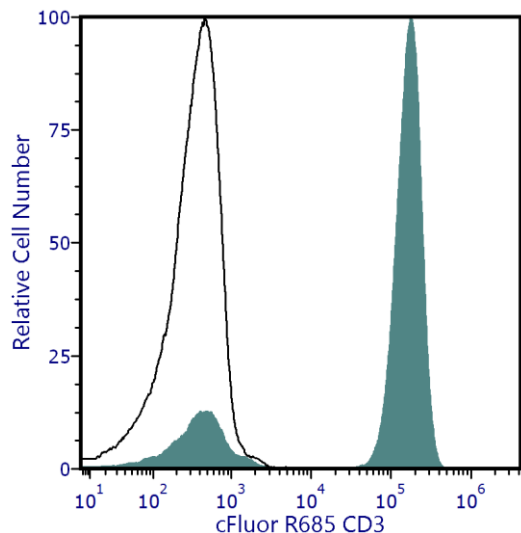
RECOMMENDED USAGE

Each lot of this antibody is quality control tested using flow cytometric analysis. For flow cytometric staining, the suggested use of this reagent is 5 µL per 1 million cells in a staining volume of 100 µL. If whole blood is analyzed, then use 5 µL per 100 µL. It is recommended that users titrate the antibody to obtain the optimal result for their specific application.

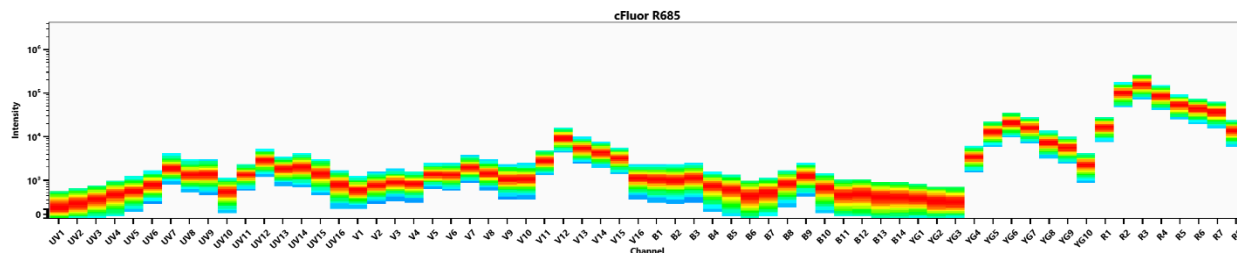
Please briefly centrifuge the reagent vial before use.

Use appropriate personal protective equipment per the product safety data sheet when using this product.

PRODUCT DATA



Human peripheral blood was stained with cFluor® R685 CD3 (clone SK7) (filled histogram) or mouse cFluor® R685 IgG1, κ isotype control (open histogram). Data shown is gated on lymphocytes.



Spectral signature of cFluor® R685 from a Cytek® Aurora 5 laser system equipped with 355, 405, 488, 561 and 640 nm lasers using CytekAssaySetting.

REFERENCES

1. Dong, D., et al. 1981. Nature. 573, 546–552
2. Weiss A, et al. 1991. Semin Immunol. (5):313-24

For Research Use Only. Not intended for use in diagnostic procedures.

*cFluor® R685 is equivalent to CF®660C manufactured and provided by Biotium, Inc. under an Agreement between Biotium and Cytek (LICENSEE). The manufacture, use, sale, offer for sale, or import of the product is covered by one or more of the patents or pending applications owned or licensed by Biotium. The purchase of this product includes a limited, non-transferable immunity from suit under the foregoing patent claims for using only this amount of product for the purchaser's own internal research. No right under any other patent claim, no right to perform any patented method, and no right to perform commercial services of any kind, including without limitation reporting the results of purchaser's activities for a fee or other commercial consideration, is conveyed expressly, by implication, or by estoppel.