

## cFluor<sup>®</sup> B515 Anti-Human CD14 (MEM-18)

PRODUCT DETAILS	
<b>Catalog Number:</b>	R7-20333 (100 tests) R7-20334 (25 tests)
<b>Reactivity:</b>	Human
<b>Clone:</b>	MEM-18
<b>Format:</b>	cFluor <sup>®</sup> B515*
<b>Isotype:</b>	Mouse IgG1, $\kappa$
<b>Test Dilution:</b>	5 $\mu$ L / test
<b>Application:</b>	Flow cytometry
<b>Formulation:</b>	Phosphate-buffered saline, pH 7.2, containing 0.09% sodium azide and 0.2% BSA (BSA Country of Origin USA)
<b>Storage:</b>	2-8°C and protected from light. <b>Do not freeze</b>

### PRODUCT DESCRIPTION

The MEM-18 monoclonal antibody binds to human CD14, a 53-55-kDa glycosylphosphatidylinositol (GPI)-linked membrane glycoprotein that works as a receptor on myeloid cells for ligands such as lipopolysaccharide (LPS)<sup>1</sup>. It is found that CD14 is a receptor for and binds to complexes of LPS and LBP with high affinity<sup>2</sup>. It expresses on monocytes and macrophages at high levels. It is also present in some interfollicular dendritic cells and macrophages, reticular dendritic cells and Langerhans cells. The antibody was conjugated to a fluorophore and purified by chromatography

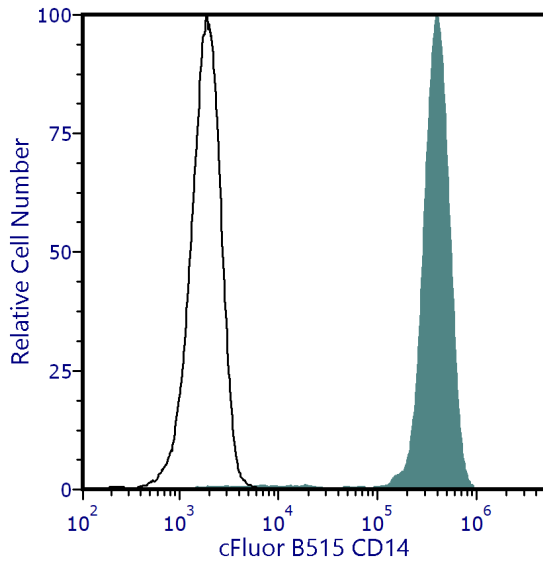
### RECOMMENDED USAGE

Each lot of this antibody is quality control tested using flow cytometric analysis. For flow cytometric staining, the suggested use of this reagent is 5  $\mu$ L per 1 million cells in a staining volume of 100  $\mu$ L. If whole blood is analyzed, then use 5  $\mu$ L per 100  $\mu$ L. It is recommended that users titrate the antibody to obtain the optimal result for their specific application.

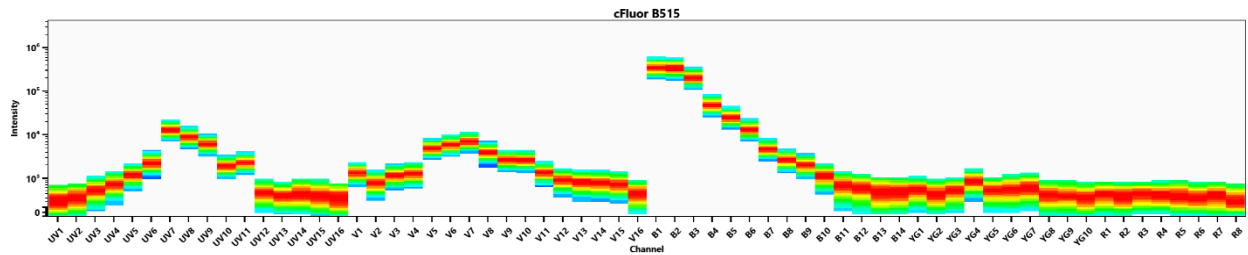
Please briefly centrifuge the reagent vial before use.

Use appropriate personal protective equipment per the product safety data sheet when using this product.

PRODUCT DATA



Human peripheral blood was stained with cFluor® B515 CD14 (clone MEM-18) (filled histogram) or mouse cFluor® B515 IgG1, κ (open histogram). Data shown is gated on monocytes.



Spectral signature of cFluor® B515 from a Cytek® Aurora 5 laser system equipped with 355, 405, 488, 561 and 640nm lasers using CytekAssaySetting.

REFERENCES

1. Pugin J, et al. 1998. Infect Immun. 66:1174
2. Wright SD, et al. 1990. Science. 249:1431

**For Research Use Only. Not intended for use in diagnostic procedures.**

\*cFluor® B515 is equivalent to CF®488A manufactured and provided by Biotium, Inc. under an Agreement between Biotium and Cytek (LICENSEE). The manufacture, use, sale, offer for sale, or import of the product is covered by one or more of the patents or pending applications owned or licensed by Biotium. The purchase of this product includes a limited, non-transferable immunity from suit under the foregoing patent claims for using only this amount of product for the purchaser's own internal research. No right under any other patent claim, no right to perform any patented method, and no right to perform commercial services of any kind, including without limitation reporting the results of purchaser's activities for a fee or other commercial consideration, is conveyed expressly, by implication, or by estoppel.