

cFluor[®] BYG610 Anti-Human CD123 (6H6)

PRODUCT DETAILS	
Catalog Number:	R7-20317 (100 tests) R7-20318 (25 tests) R7-20438 (25 tests)
Reactivity:	Human, Rhesus
Clone:	6H6
Format:	cFluor [®] BYG610 ¹
Isotype:	Mouse IgG1, κ
Test Dilution:	5 μL / test
Application:	Flow cytometry
Formulation:	Phosphate-buffered saline, pH 7.2, containing 0.09% sodium azide and 0.2% BSA (BSA Country of Origin USA)
Storage:	2-8°C and protected from light. Do not freeze

PRODUCT DESCRIPTION

The 6H6 monoclonal antibody binds to human CD123, a 70-kDa type I transmembrane glycoprotein in the immunoglobulin superfamily, also known as the Interleukin-3 receptor alpha chain. CD123 alone has low affinity to IL-3 and develops high affinity when associated with βc (common chain)¹. The CD123 molecule is expressed predominantly on hematopoietic progenitor cells, macrophages, dendritic cells, basophils, eosinophils, monocytes, megakaryocytes and some B cells^{2,3}. It is also present in myeloid, lymphoid, and vascular endothelial cells⁴. The antibody was conjugated to a fluorophore and purified by affinity chromatography.

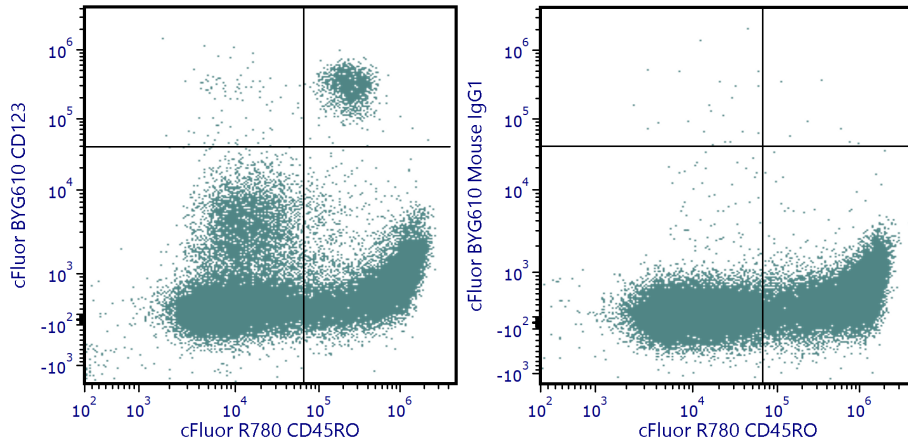
RECOMMENDED USAGE

Each lot of this antibody is quality control tested using flow cytometric analysis. For flow cytometric staining, the suggested use of this reagent is 5 μL per 1 million cells in a staining volume of 100 μL. If whole blood is analyzed, then use 5 μL per 100 μL. It is recommended that users titrate the antibody to obtain the optimal result for their specific application.

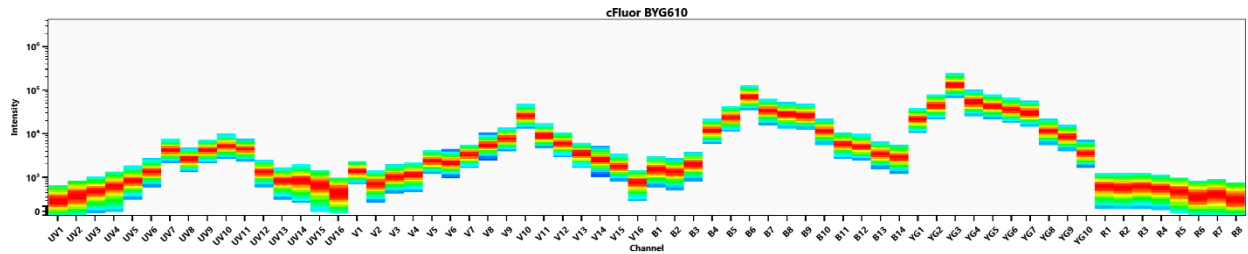
Please briefly centrifuge the reagent vial before use.

Use appropriate personal protective equipment per the product safety data sheet when using this product.

PRODUCT DATA



Human peripheral blood was stained with cFluor® R780 CD45RO and cFluor® BYG610 CD123 (clone 6H6) (left) or cFluor® BYG610 mouse IgG1, κ isotype control (right). Data shown is gated on lymphocytes.



Spectral signature of cFluor® BYG610 from a Cytek® Aurora 5 laser system equipped with 355, 405, 488, 561 and 640 nm lasers using CytekAssaySetting.

REFERENCES

1. Broughton SE, et al. 2014. Cell Rep. 8:410
2. Macardle PJ, et al. 1996. Cell Immunol. 168:59
3. Yamada T, et al. 1998. J Allergy Clin Immunol. 101:677
4. Sun Q, et al. 1996. Blood. 87:83

For Research Use Only. Not intended for use in diagnostic procedures.

¹cFluor® BYG610 is a tandem dye made with R-PE. Caution – Tandem dyes may show changes in their emission spectra with prolonged exposure to light or fixatives.