

## cFluor<sup>®</sup> BYG710 Anti-Human CD117 (104D2)

PRODUCT DETAILS	
<b>Catalog Number:</b>	R7-20301 (100 tests) R7-20302 (25 tests)
<b>Reactivity:</b>	Human, Cynomolgus, Bovine
<b>Clone:</b>	104D2
<b>Format:</b>	cFluor <sup>®</sup> BYG710*
<b>Isotype:</b>	Mouse IgG1, $\kappa$
<b>Test Dilution:</b>	5 $\mu$ L / test
<b>Application:</b>	Flow cytometry
<b>Formulation:</b>	Phosphate-buffered saline, pH 7.2, containing 0.09% sodium azide and 0.2% BSA (BSA Country of Origin USA)
<b>Storage:</b>	2-8°C and protected from light. <b>Do not freeze</b>

### PRODUCT DESCRIPTION

The 104D2 monoclonal antibody binds to human CD117, a 145-kDa protein tyrosine kinase. CD117, also known as c-kit, is the receptor for the hematopoietic cytokine stem cell factor (SCF) expressed on hematopoietic progenitor cell subsets, thymocytes, mast cells hepatocytes and histiocytes. It is also commonly expressed on acute myeloid leukemias (AML). When bound to stem cell factor (c-kit ligand), CD117 activates tyrosine kinase and is involved in cell survival, proliferation and differentiation. The antibody is conjugated to a fluorophore and purified by chromatography.

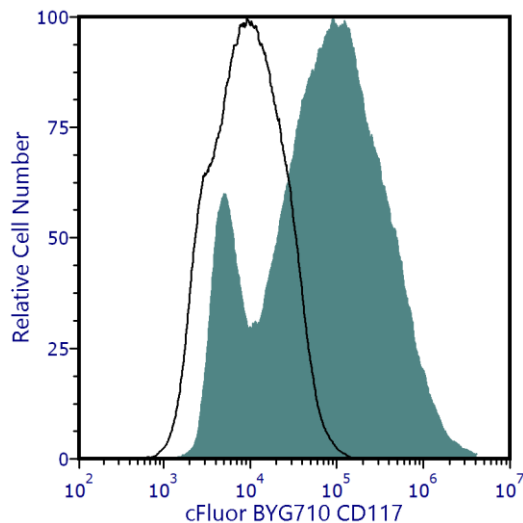
### RECOMMENDED USAGE

Each lot of this antibody is quality control tested using flow cytometric analysis. For flow cytometric staining, the suggested use of this reagent is 5  $\mu$ L per 1 million cells in a staining volume of 100  $\mu$ L. If whole blood is analyzed, then use 5  $\mu$ L per 100  $\mu$ L. It is recommended that users titrate the antibody to obtain the optimal result for their specific application.

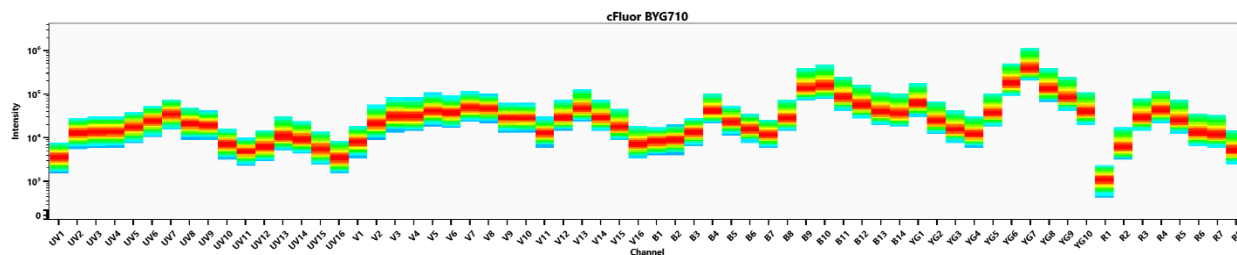
Please briefly centrifuge the reagent vial before use.

Use appropriate personal protective equipment per the product safety data sheet when using this product.

## PRODUCT DATA



Human CD-Chex CD117® QC blood stained with cFluor® BYG710 CD117 (clone 104D2) (filled histogram) or mouse cFluor® BYG710 IgG1, κ isotype control (open histogram).



Spectral signature of cFluor® BYG710 from a Cytex® Aurora 5 laser system equipped with 355, 405, 488, 561 and 640 nm lasers using CytexAssaySetting.

## REFERENCES

1. Simmons PJ, et al. 1994. *Exp Hematol*. 22(2):157-165.
2. Escribano L, et al. 1998. *Leuk Lymphoma*. 30(5-1): 459-466.
3. Blume-Jensen P, et al. 1991. *EMBO J*. 10(13): 4121-4128.

**For Research Use Only. Not intended for use in diagnostic procedures.**

\*cFluor® BYG710 is a tandem dye made with R-PE. Caution – Tandem dyes may show changes in their emission spectra with prolonged exposure to light or fixatives.