

## cFluor<sup>®</sup> BYG610 Anti-Human CD33 (WM53)

PRODUCT DETAILS	
<b>Catalog Number:</b>	R7-20021 (100 tests) R7-20022 (25 tests)
<b>Reactivity:</b>	Human
<b>Clone:</b>	WM53
<b>Format:</b>	cFluor <sup>®</sup> BYG610 <sup>1</sup>
<b>Isotype:</b>	Mouse IgG1, $\kappa$
<b>Test Dilution:</b>	5 $\mu$ L / test
<b>Application:</b>	Flow cytometry
<b>Formulation:</b>	Phosphate-buffered saline, pH 7.2, containing 0.09% sodium azide and 0.2% BSA (BSA Country of Origin USA)
<b>Storage:</b>	2-8°C and protected from light. <b>Do not freeze</b>

### PRODUCT DESCRIPTION

The WM53 monoclonal antibody binds to human CD33, a 67-kDa type I transmembrane glycoprotein in the immunoglobulin family. CD33, also known as Siglec-3, gp67, and p67, is expressed on monocytes, activated T cells, myeloid progenitors, granulocytes, dendritic cells, and mast cells. It is absent on erythrocytes, platelets, and lymphoid cells<sup>(1)(2)</sup>. CD33 binds to sialic acids to act as a sialic acid-dependent cell adhesion molecule. It also contains intracellular tyrosine-based inhibition motifs (ITIMs), suggesting its function to inhibit cellular activity<sup>(3)</sup>. The antibody was conjugated to a fluorophore and purified by chromatography.

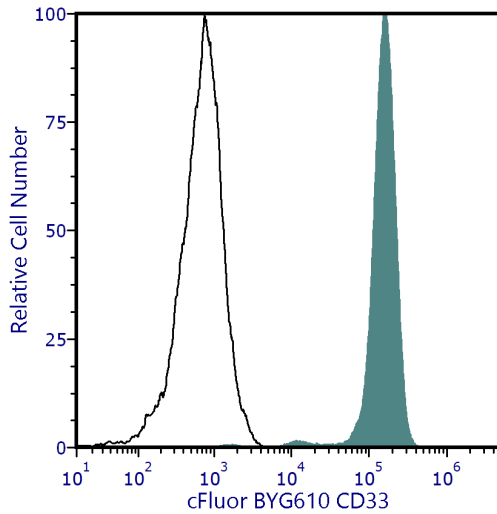
### RECOMMENDED USAGE

Each lot of this antibody is quality control tested using flow cytometric analysis. For flow cytometric staining, the suggested use of this reagent is 5  $\mu$ L per 1 million cells in a staining volume of 100  $\mu$ L. If whole blood is analyzed, then use 5  $\mu$ L per 100  $\mu$ L. It is recommended that users titrate the antibody to obtain the optimal result for their specific application.

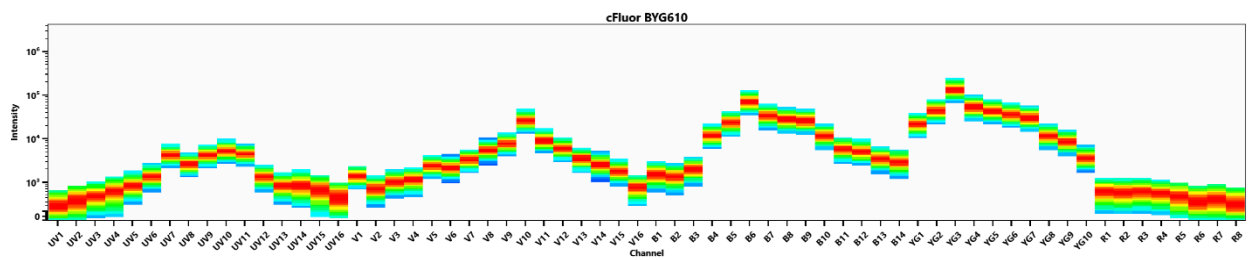
Please briefly centrifuge the reagent vial before use.

Use appropriate personal protective equipment per the product safety data sheet when using this product.

PRODUCT DATA



Human peripheral blood stained with cFluor® BYG610 CD33 (clone WM53) (filled histogram) or mouse cFluor® BYG610 IgG1, κ isotype control (open histogram). Data shown is gated on monocytes.



Spectral signature of cFluor® BYG610 from a Cytek® Aurora 5 laser system equipped with 355, 405, 488, 561 and 640 nm lasers using CytekAssaySetting

REFERENCES

1. Favaloro EJ, et al. 1987. Dis Markers. 5(4):215-225
2. Nakamura Y, et al. 1994. Blood. 83(5):1442-3
3. Freeman SD, et al. 1995. Blood. 85(8):2005-2012
4. Walter RB, et al. 2007. Traffic. 9(2):267-279

**For Research Use Only. Not intended for use in diagnostic procedures.**

<sup>1</sup>cFluor® BYG610 is a tandem dye made with R-PE. Caution – Tandem dyes may show changes in their emission spectra with prolonged exposure to light or fixatives.