

## cFluor® R668 Anti-Human CD8 (SK1)

PRODUCT DETAILS	
<b>Catalog Number:</b>	R7-20227 (100 tests) R7-20228 (25 tests)
<b>Reactivity:</b>	Human, Chimpanzee, Cynomolgus, Pigtailed Macaque, Rhesus, Sooty Mangabey
<b>Clone:</b>	SK1
<b>Format:</b>	cFluor® R668*
<b>Isotype:</b>	Mouse IgG1, κ
<b>Volume Per Test:</b>	5 µL / test
<b>Application:</b>	Flow cytometry
<b>Formulation:</b>	Phosphate-buffered saline, pH 7.2, containing 0.09% sodium azide and 0.2% BSA (BSA Country of Origin USA)
<b>Storage:</b>	2-8°C and protected from light. <b>Do not freeze</b>

### PRODUCT DESCRIPTION

The SK1 monoclonal antibody binds to human CD8a, a 32-34-kDa type I glycoprotein that forms either as an  $\alpha/\alpha$  homodimer or  $\alpha/\beta$  heterodimer with its isoform CD8b. CD8 is found on thymocytes, a subset of peripheral blood T cells, majority expressing  $\alpha/\beta$  heterodimer, and NK cells, majority expressing  $\alpha/\alpha$  homodimer<sup>1</sup>. CD8 plays a role in antigen recognition and class I MHC-restricted T cell development. CD8 functions are associated with two domains of CD8a. CD8a ectodomain binding to the  $\alpha 3$  domain of MHC class I increases the adhesion between CD8+ T lymphocytes and target cells. The cytoplasmic tail binding to the tyrosine kinase p56<sup>lck</sup> contributes to signal transduction and T cell activation<sup>2,3</sup>. The antibody was conjugated to a fluorophore and purified by affinity chromatography.

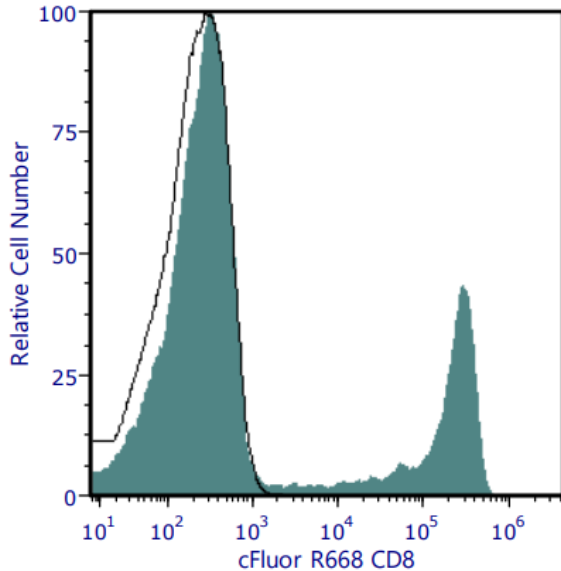
### RECOMMENDED USAGE

Each lot of this antibody is quality control tested using flow cytometric analysis. For flow cytometric staining, the suggested use of this reagent is 5 µL per 1 million cells in a staining volume of 100 µL. If whole blood is analyzed, then use 5 µL per 100 µL. It is recommended that users titrate the antibody to obtain the optimal result for their specific application.

Please briefly centrifuge the reagent vial before use.

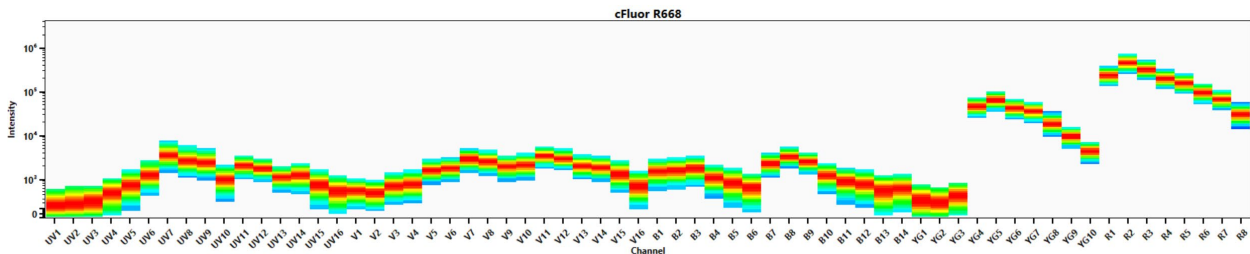
Use appropriate personal protective equipment per the product safety data sheet when using this product.

PRODUCT DATA



Human peripheral blood was stained with cFluor® R668 Anti-Human CD8 (clone SK1) (filled histogram) or cFluor® R668 mouse IgG1, κ isotype control (open histogram). Data shown is gated on lymphocytes.

Spectral signature of cFluor® R668 from a Cytex® Aurora 5 laser system equipped with 355, 405, 488, 561 and 640 nm lasers using CytexAssaySetting.



REFERENCES

1. Cole DK, et al. 2004. Cell Mol Immunol. 1(2):81-8
2. Kern Petra S., et al. 1998. Immunity. 9: 519-530
3. Veillette A. et al. 1988. Cell. 55:301-308

\*cFluor™ R668 is equivalent to CF® 647 manufactured and provided by Biotium, Inc. under an Agreement between Biotium and Cytex (LICENSEE). The manufacture, use, sale, offer for sale, or import of the product is covered by one or more of the patents or pending applications owned or licensed by Biotium. The purchase of this product includes a limited, non-transferable immunity from suit under the foregoing patent claims for using only this amount of product for the purchaser's own internal research. No right under any other patent claim, no right to perform any patented method, and no right to perform commercial services of any kind, including without limitation reporting the results of purchaser's activities for a fee or other commercial consideration, is conveyed expressly, by implication, or by estoppel.

**For Research Use Only. Not intended for use in diagnostic procedures.**